

# BRAINS ON FIRE OFFICE

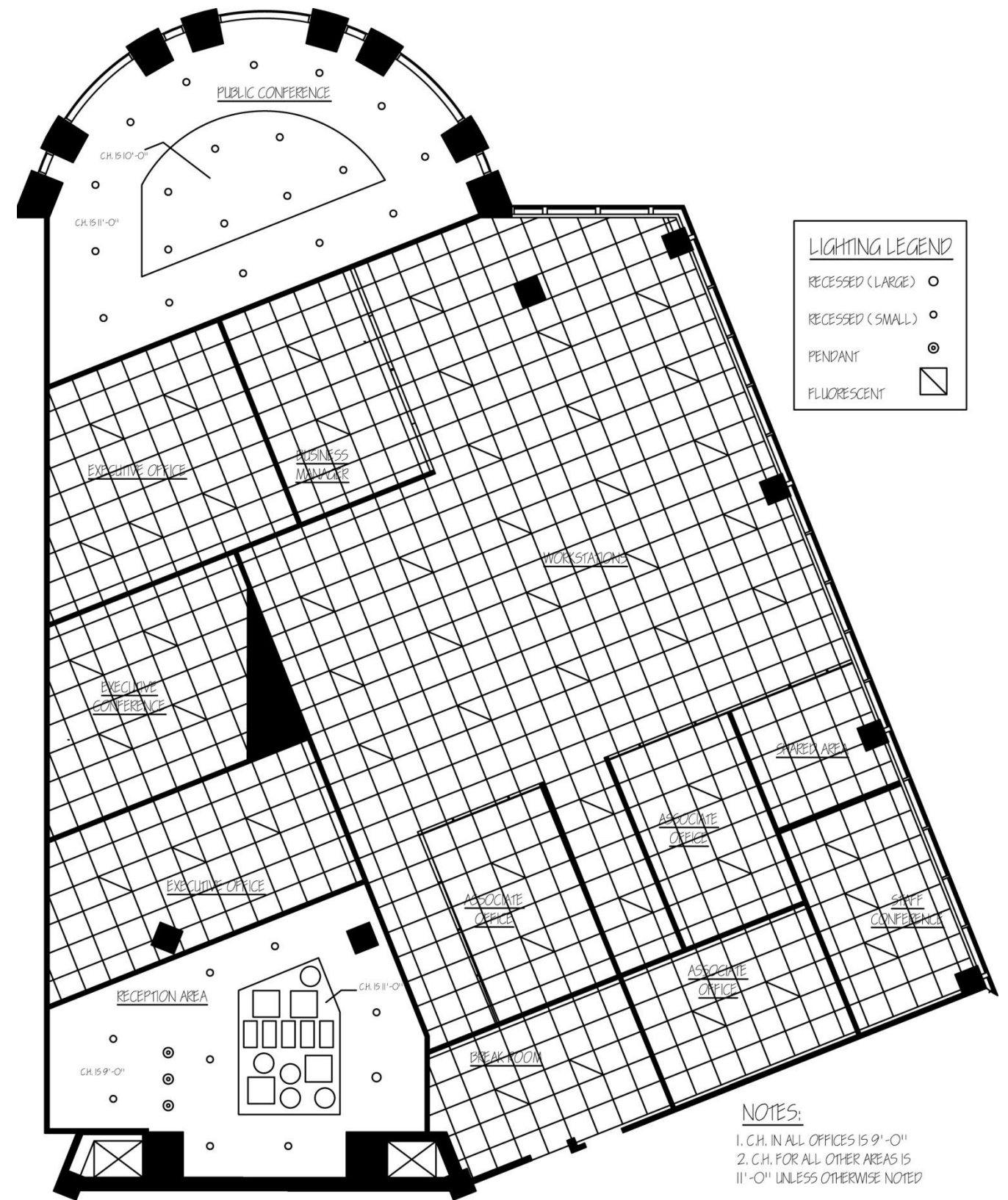
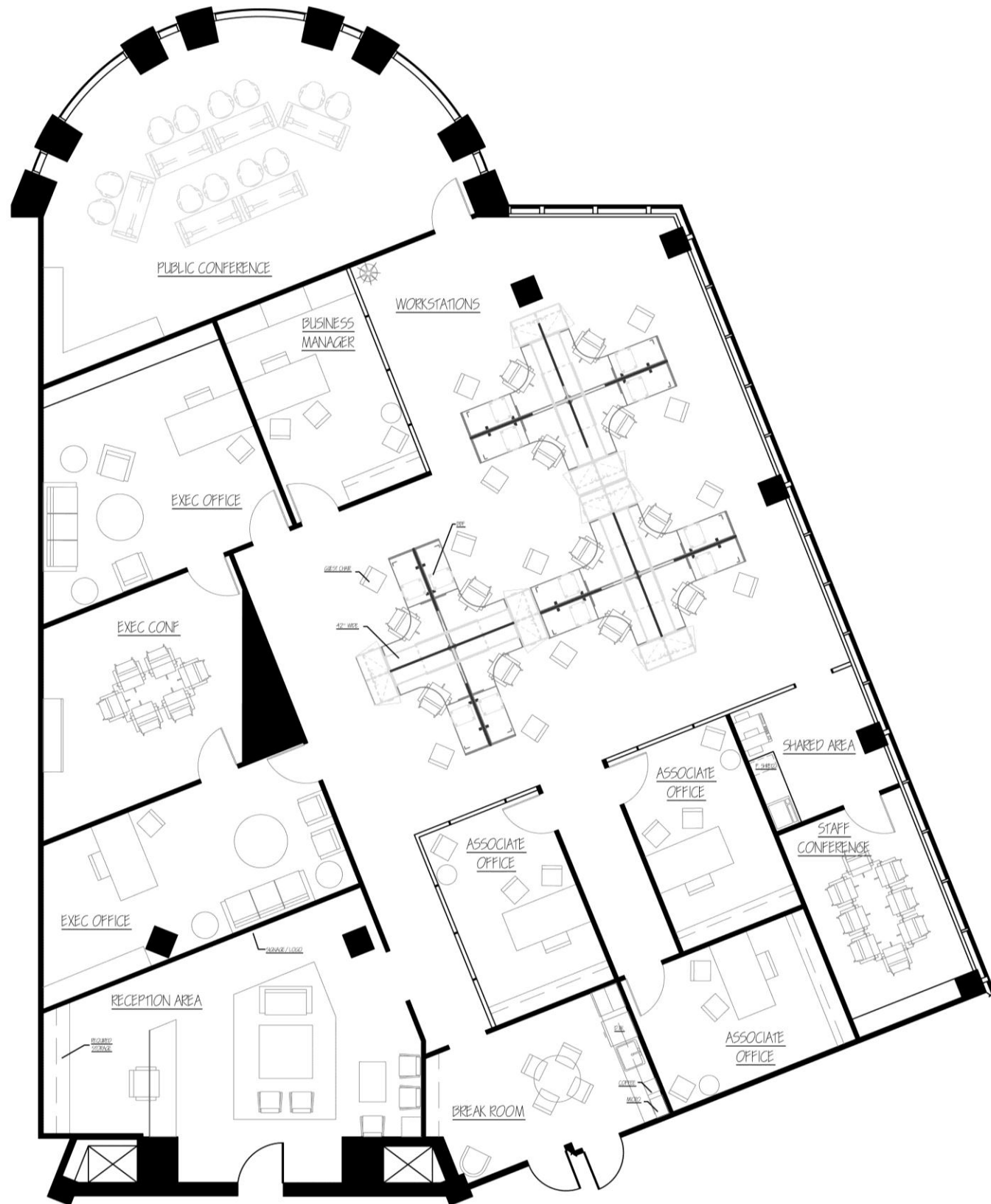
BRAINS ON FIRE is a creative company that imagines and designs brand and corporate identities. This company thrives on the principle of “fandom” from its clients and promotes teamwork and a creative, childish thought process.

The design of the space will reflect these essential cornerstones by creating an environment that allows the client to truly understand the employees at BRAINS ON FIRE and their process and dedication. The sunlight on the east side will be maximized by organizing the smaller workstations so that the largest amount of people can enjoy the sunlight. The large conference room will serve as a flexible space for seminars and group brainstorming. Overall, the design will stimulate innovative ideas through its unique space planning, vibrant color scheme, and contemporary style.



INSPIRATION

# BRAINS ON FIRE OFFICE: FLOOR PLAN AND RCP



**LIGHTING LEGEND**

RECESSED (LARGE)	○
RECESSED (SMALL)	◦
PENDANT	⊙
FLUORESCENT	◻

**NOTES:**  
 1. C.H. IN ALL OFFICES IS 9'-0"  
 2. C.H. FOR ALL OTHER AREAS IS 11'-0" UNLESS OTHERWISE NOTED

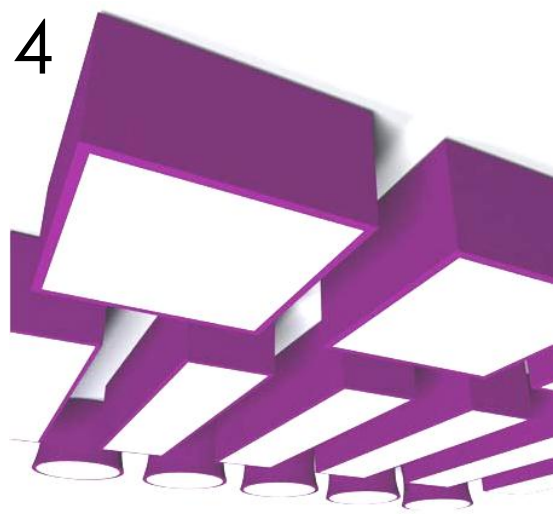
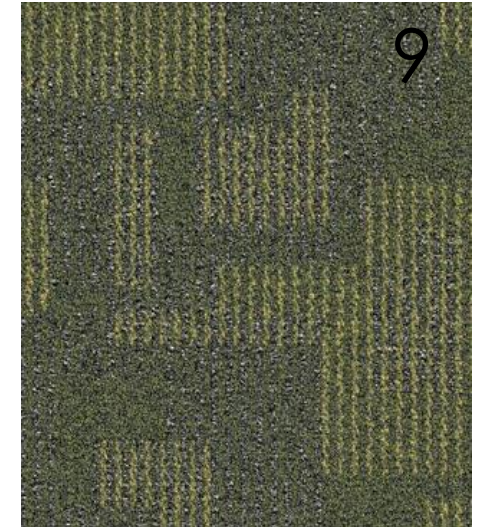
# BRAINS ON FIRE OFFICE: FF&E

- 1. Reception Sofa Fabric
- 2. Executive Office Chair
- 3. Reception Sofa

- 4. Reception Dixon Lighting
- 5. Workstation General Seating
- 6. Reception Wall Texture

- 7. Reception Floor Tiles
- 8. Reception Lounge Seating
- 9. General Flooring Carpet Tile

- 10. Workstation General Task Chair
- 11. Accent Ceiling Wood Finish



# BRAINS ON FIRE OFFICE: PERSPECTIVES

