

PNC TENANT TRIAL FIT

PNC BANK is a growing company that is seeking a new, larger space to lease for their corporate office. Before PNC BANK moves into the new space, the client would like to be certain that their growing three branches will be able to fit into the space: marketing, finance, and customer service. PNC BANK would also like to use this space to support their new, collaborative work style.

This quick, tenant trial fit for PNC BANK's new corporate office will utilize pieces from the company's current systems furniture (Steelcase's Answer System) to support an open work environment. The new, collaborative style that they are embracing will be enhanced through many varied meeting-type spaces, large gathering spaces, and areas for small teams to casually meet to discuss projects together. The plan will also provide a private workstation style for finance, a collaborative space for marketing, and small but comfortable spaces for the company's large number of customer service employees.

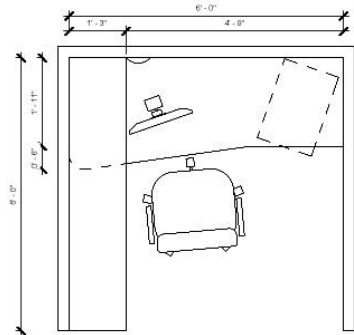


INSPIRATION

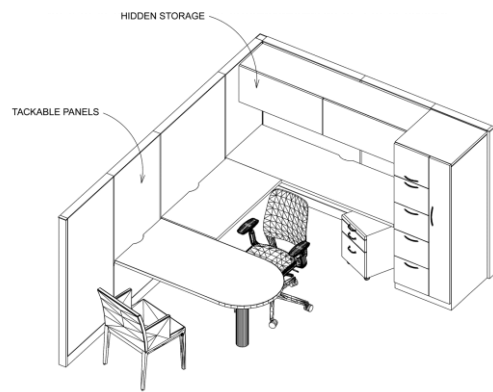
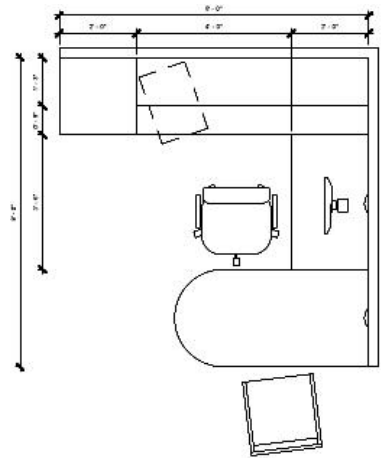


PNC TENANT TRIAL FIT: TYPICALS AND FLOOR PLAN

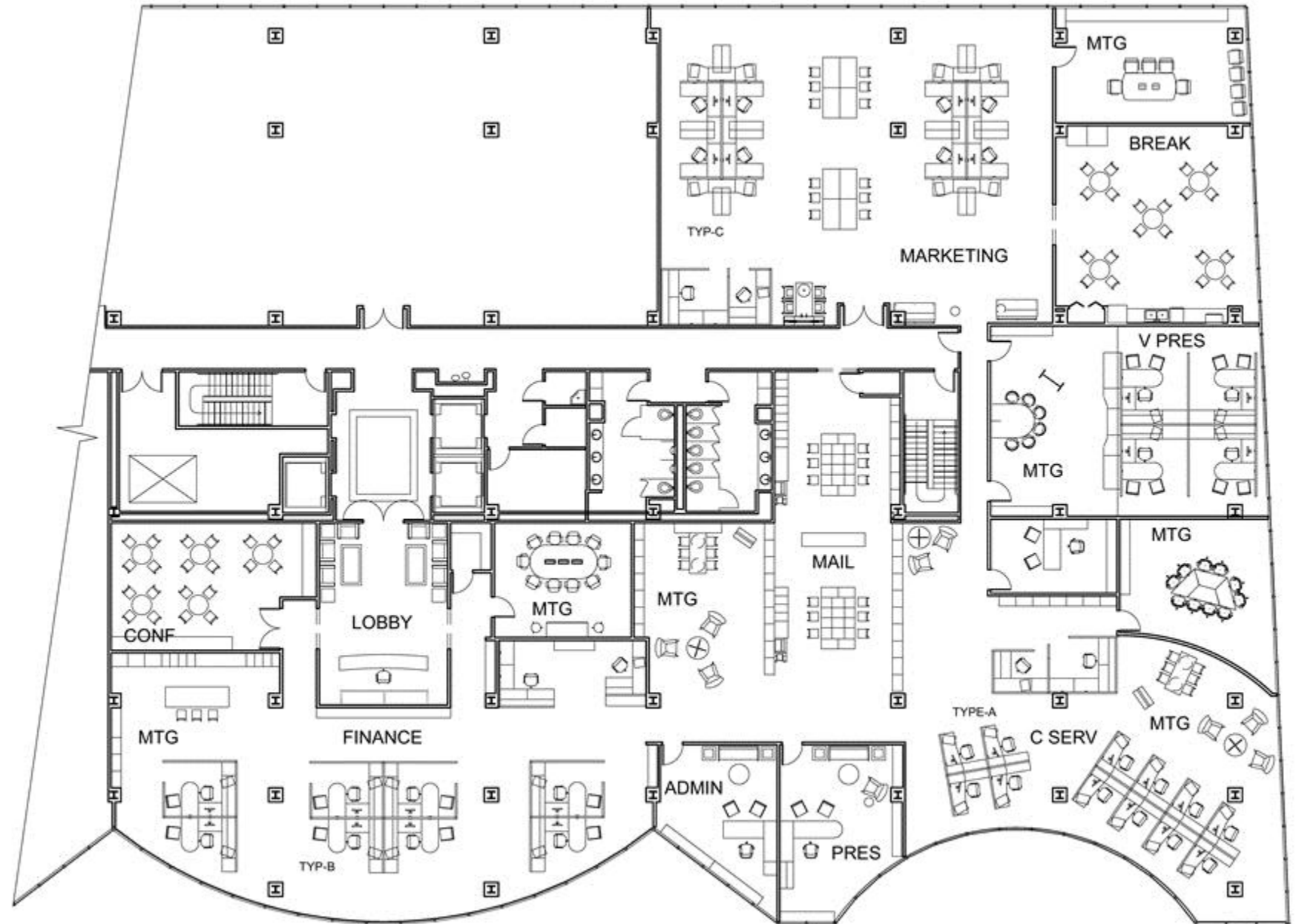
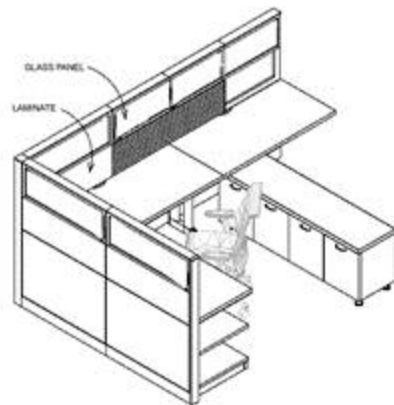
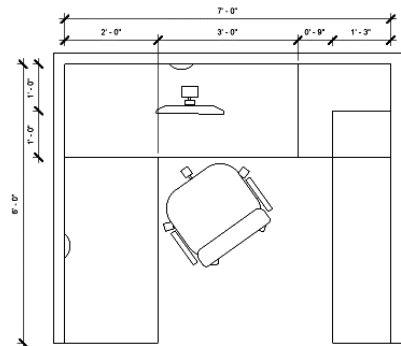
TYPICAL A



TYPICAL B



TYPICAL C



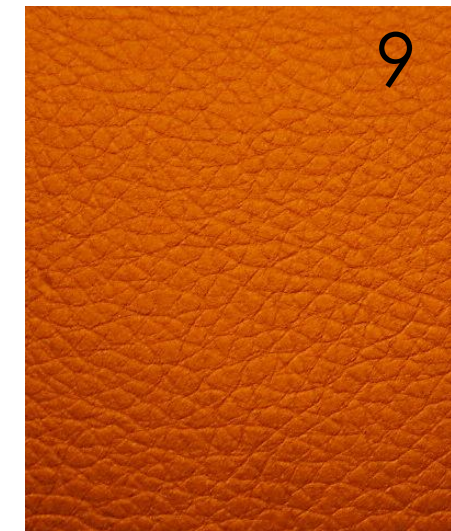
PNC TENANT TRIAL FIT: FF&E

- 1. General Area Flooring
- 2. Meeting Area Media Table
- 3. Lobby Coffee Table

- 4. Lounge Area Coffee Table
- 5. Workstation General Seating
- 6. Lobby Lounge Seating

- 7. Collaborative Area Board
- 8. Lounge Area Seating Upholstery
- 9. Stool Upholstery

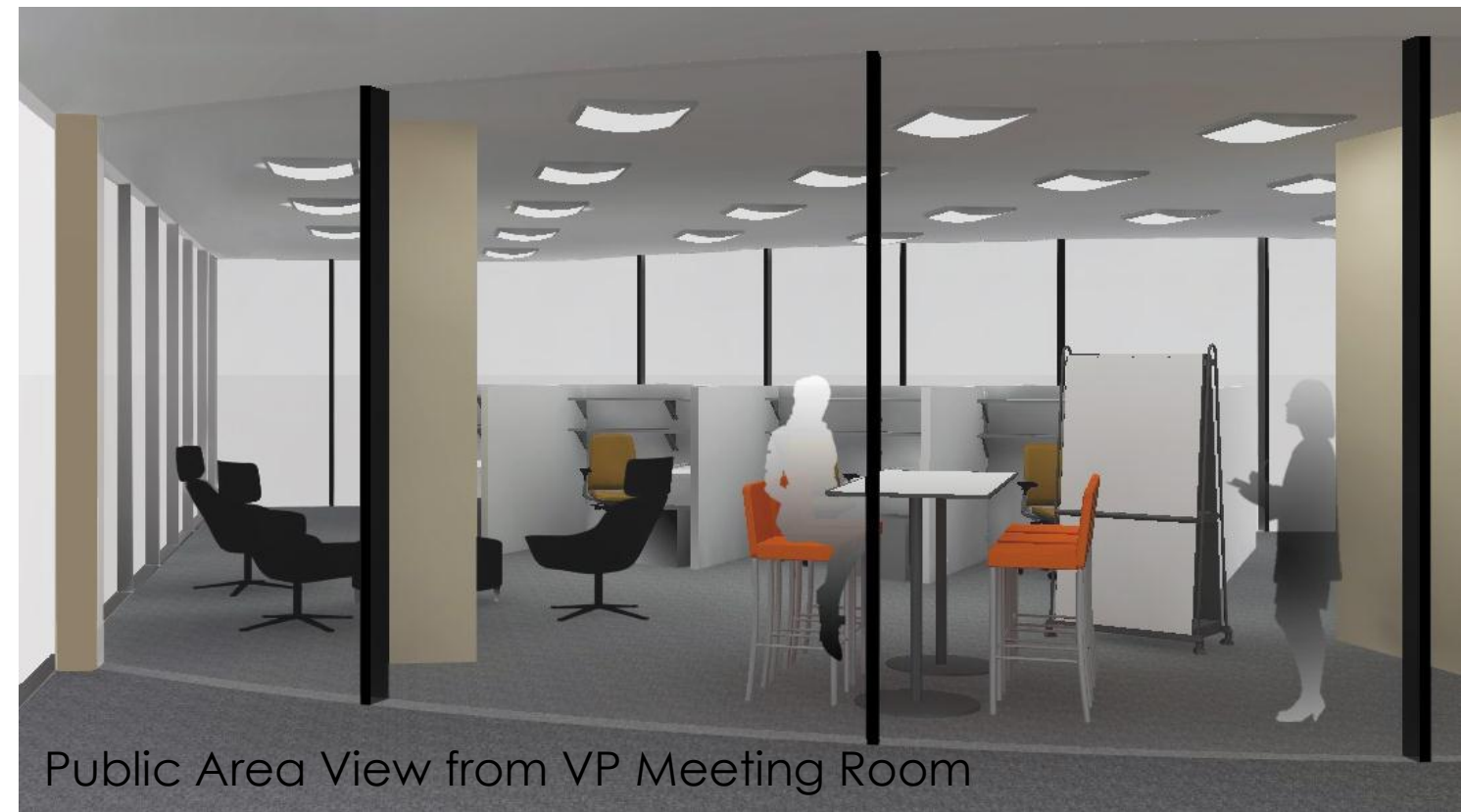
- 10. Lounge Area Seating
- 11. Collaborative Area Stools



PNC TENANT TRIAL FIT: PERSPECTIVES



Lobby



Public Area View from VP Meeting Room