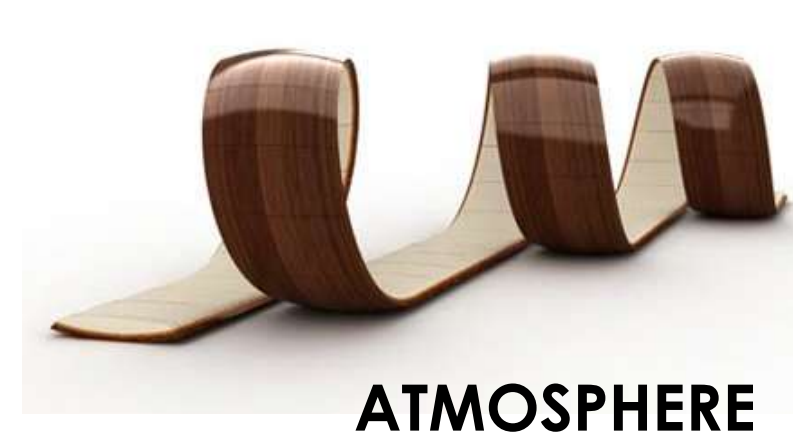
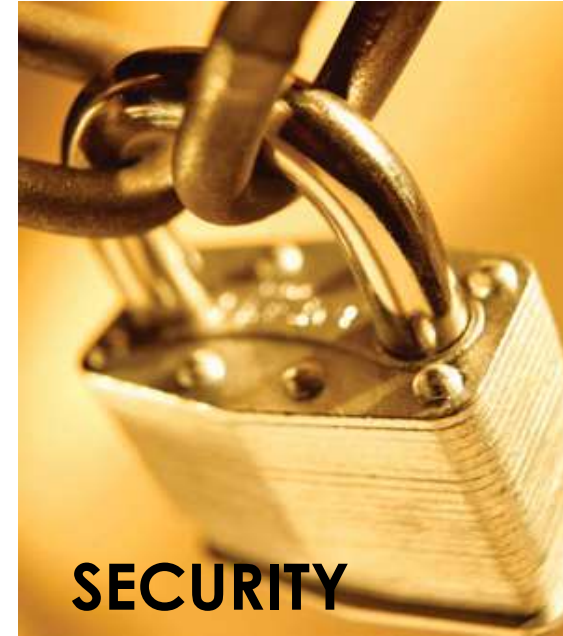


TOLTEC: MIXED-USE RESTAURANT AND MUSIC VENUE

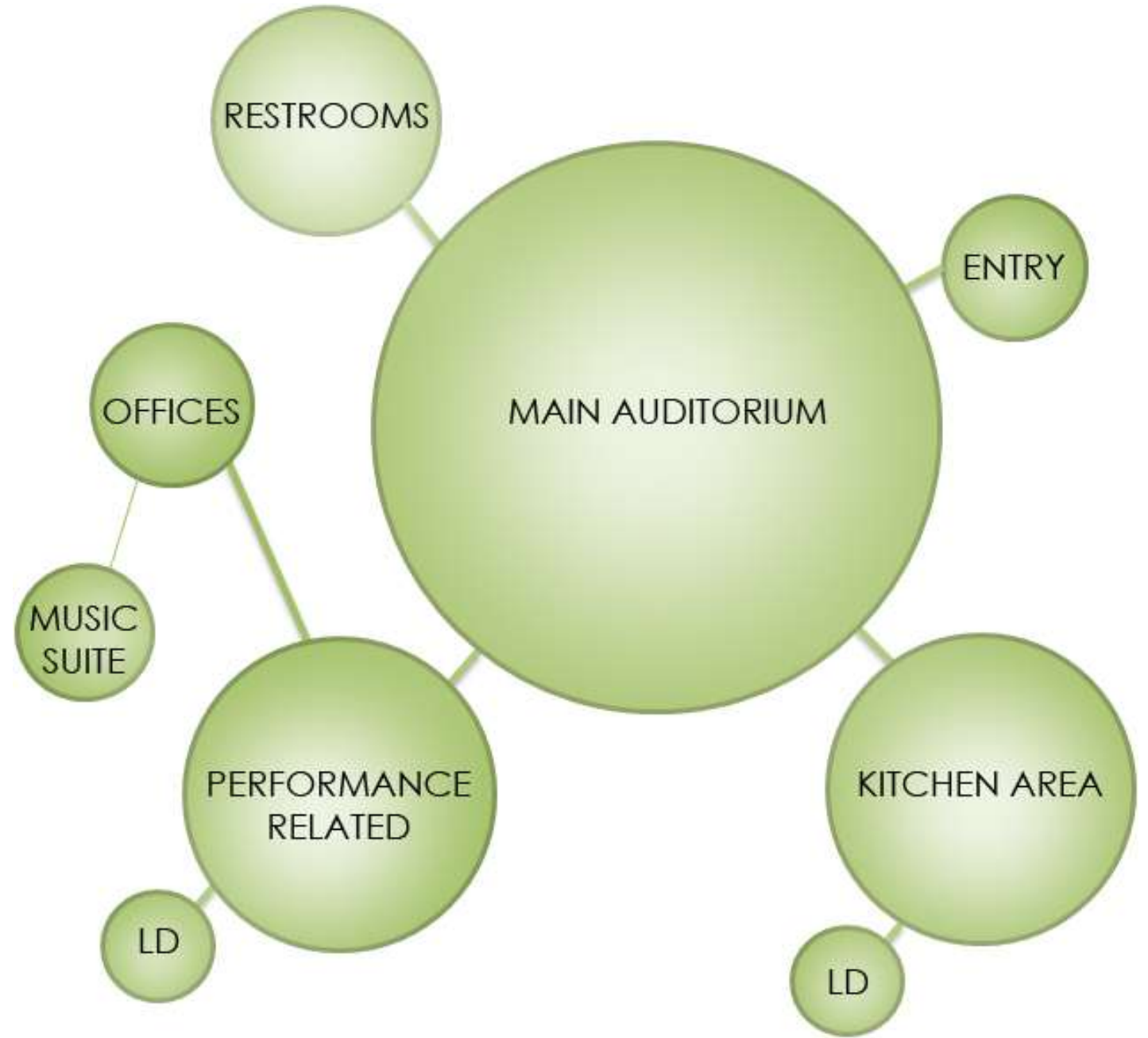
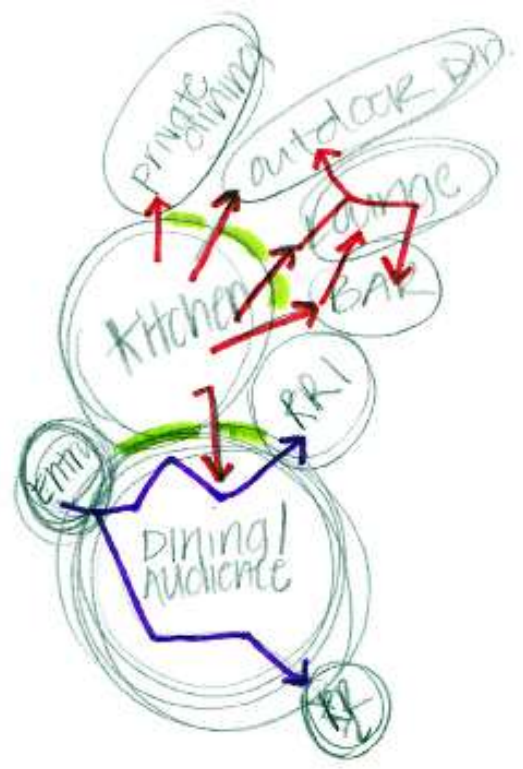
The City of Rock Hill and Winthrop University support local businesses and wish to create more cultural and entertainment opportunities in the Rock Hill; they want to focus on the revitalization of the Old Town area and provide a mixed-use restaurant and music venue that will capture the attention of local residents and students.

The design of this facility will attract local residents through updated and exciting indoor and outdoor atmospheres. The space will be designed in a flexible manner with separated areas - enabling different events to occur at the same time. The iconic, staggered façade of the original facility will be reflected in the use of colors and textures associated with the Aztec tribe. This theme will also be translated into material selections to support energy and movement throughout the environment. The space plan will support a circular wayfinding pattern throughout the space to further encourage discovery and movement, as well as incorporate the pattern of the Aztec calendar. This space will be flexible enough to support different kinds of events and unique enough to encourage customers to visit often.



INSPIRATION

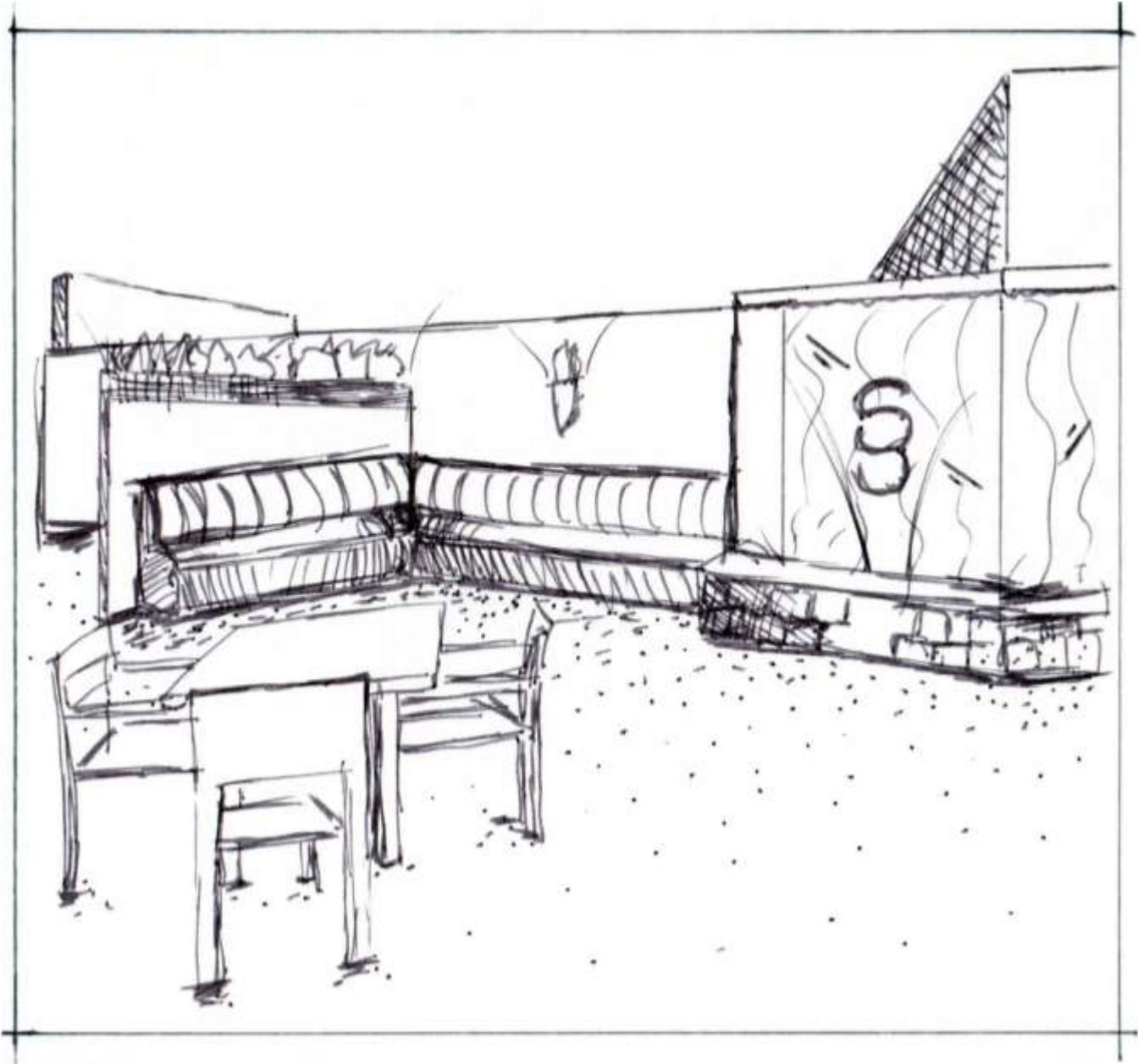
TOLTEC: PROCESS WORK



TOLTEC: SITE PLAN AND SKETCH



SITE PLAN



OUTDOOR DINING AREA SKETCH

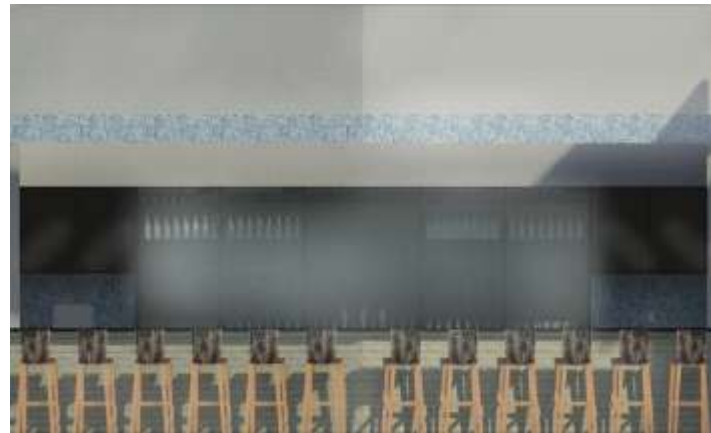
TOLTEC: WORKING DRAWINGS



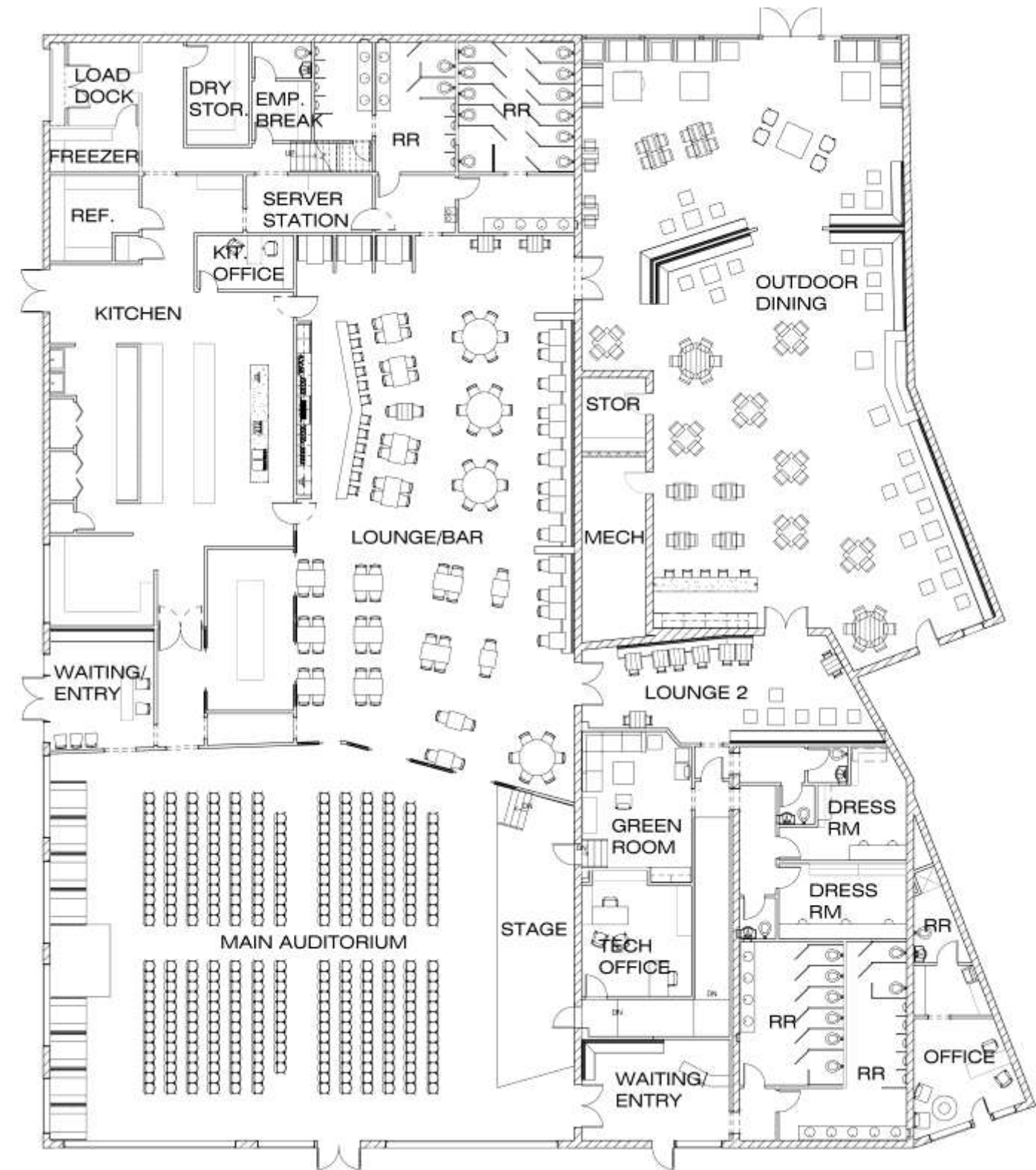
SOUTH EXTERIOR ELEVATION



EAST EXTERIOR ELEVATION



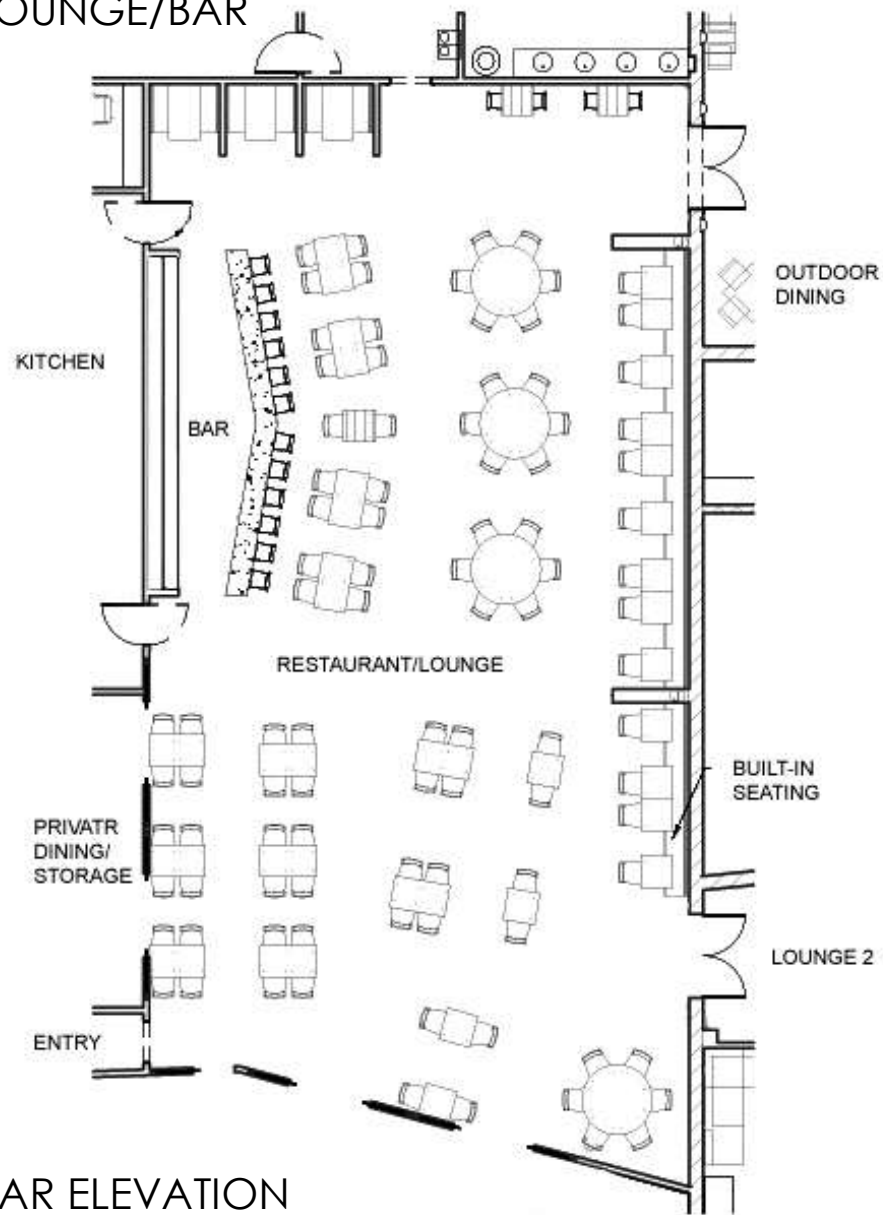
INTERIOR BAR ELEVATION



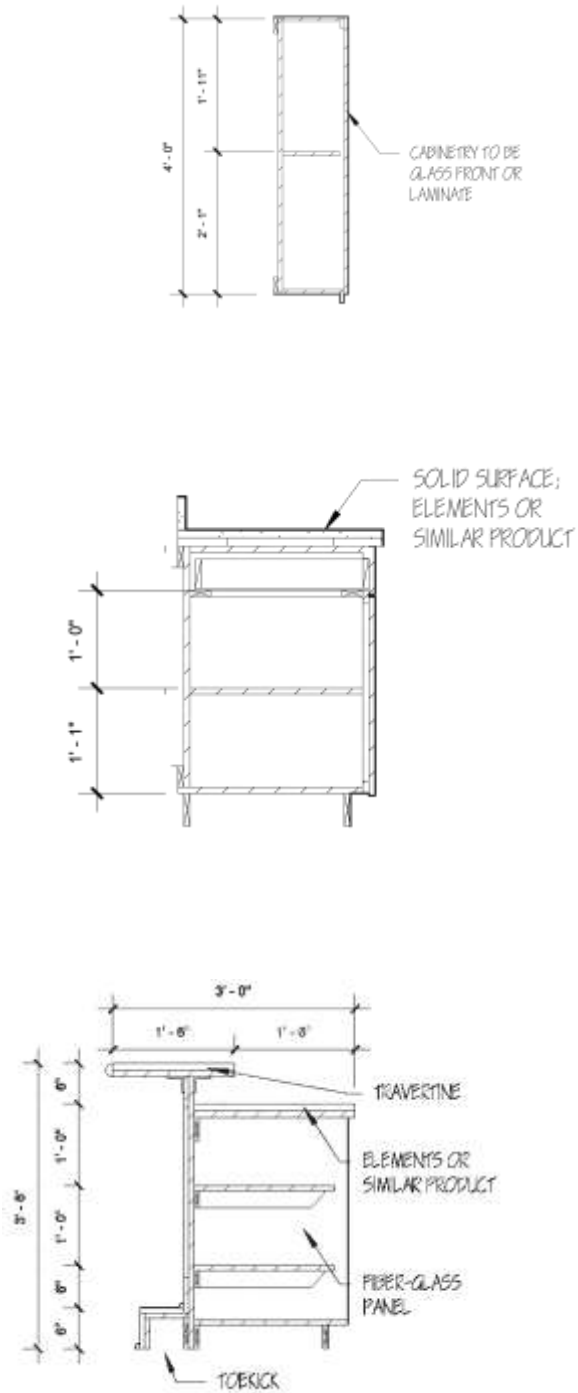
MIXED-USE FACILITY MAIN FLOOR PLAN

TOLTEC: WORKING DRAWINGS

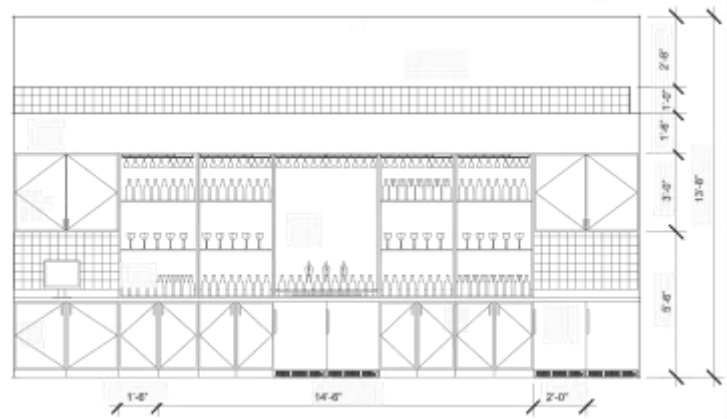
LOUNGE/BAR



BAR SECTIONS

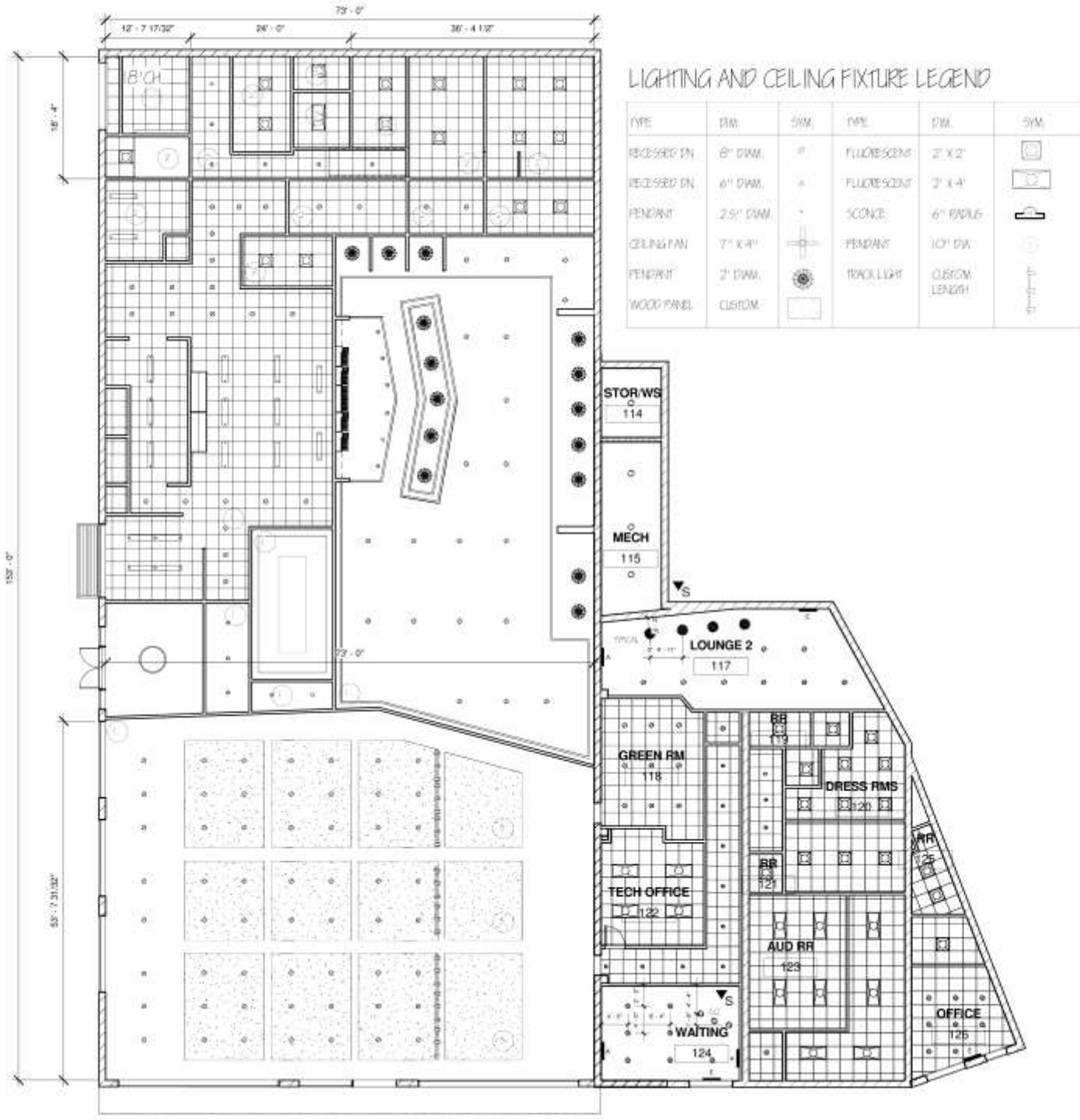


BAR ELEVATION

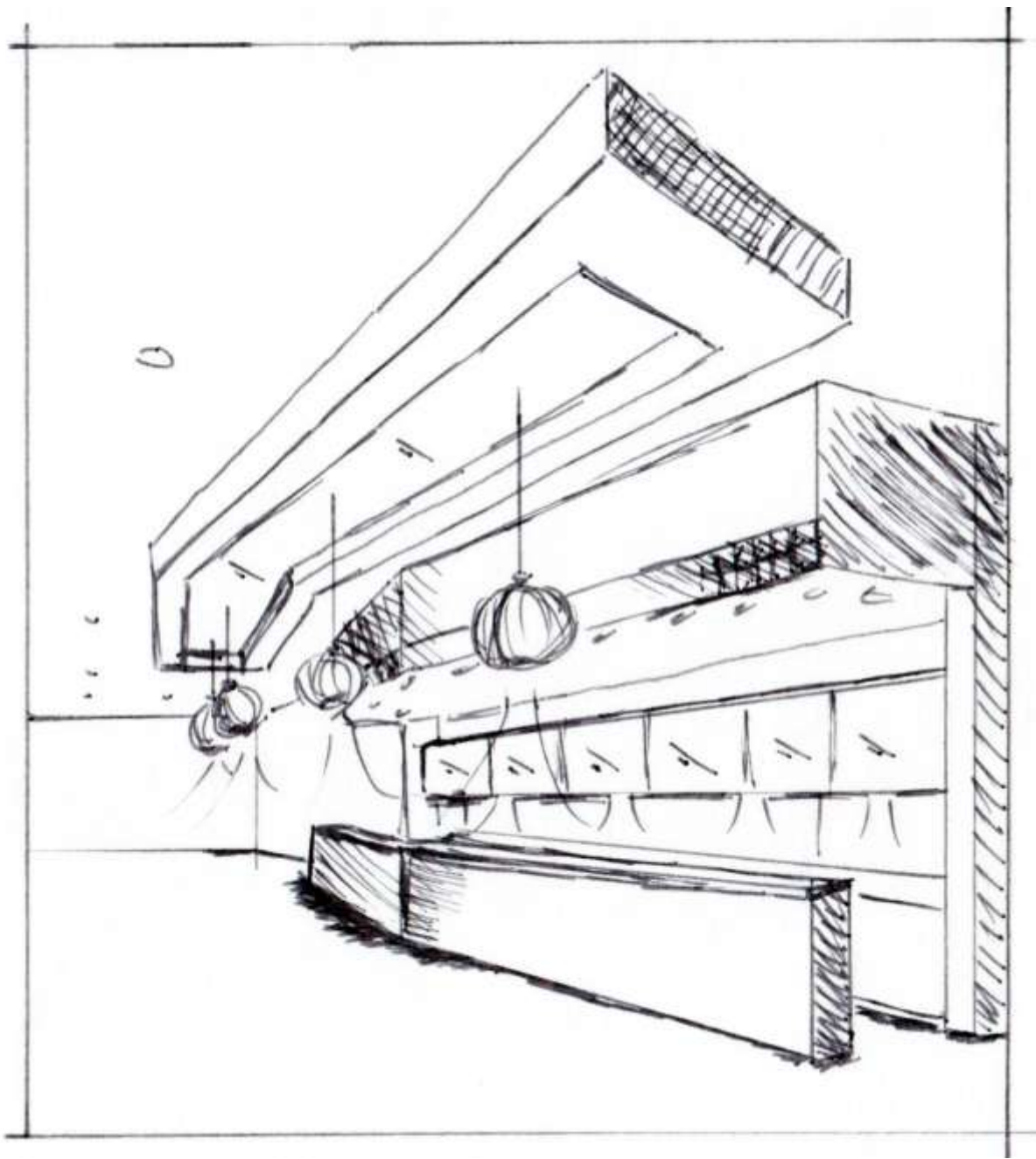


MIXED-USE FACILITY MAIN FLOOR PLAN

TOLTEC: RCP AND SKETCH

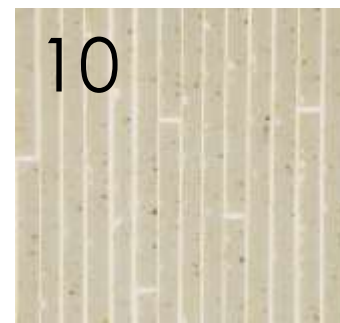
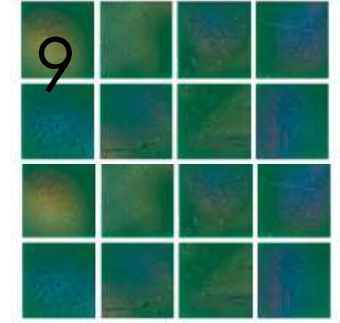
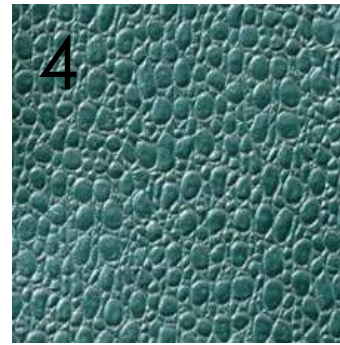
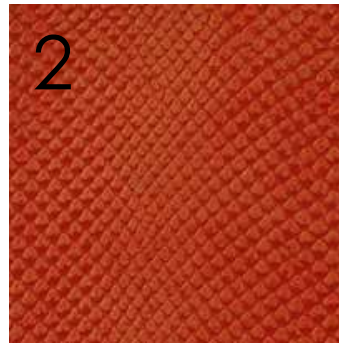


REFLECTED CEILING PLAN



BAR SKETCH WITH PENDANT LIGHTING

TOLTEC: LOUNGE/BAR FF&E



- 1. Wood Flooring
- 2. Barstool
- 3. Booth Back
- 4. Booth Seat

- 5. Dining Chair
- 6. Lounge Seating
- 7. Bar Pendant
- 8. Lounge Pendant

- 9. Accent Tile
- 10. Bar Face Panel
- 11. Bar Countertop
- 12. Fireplace

- 13. Barstool
- 14. Tabletop
- 15. Dining Chair
- 16. Lounge Seating

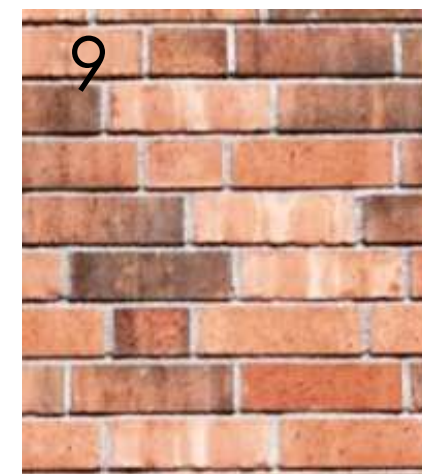


TOLTEC: MUSIC VENUE FF&E

1. Sound Equipment
2. Lighting Equipment
3. Projector Screen
4. Stackable Seating

5. Acoustic Sound Panels
6. Seating Upholstery
7. Acoustic Wood Ceiling

8. Pine Stage Flooring
9. Exposed Brick Wall
10. Carpet Tile Flooring



TOLTEC: 3D PERSPECTIVES



Restaurant/Lounge West Bar



Auditorium East Wall



Restaurant/Lounge East Wall